

# Industry 4.0 & Data Analytics for Casting Industry



## About Us

An 8-year-old organization with strong & Experienced team of Instrumentation, Software, Process & Thermal Engineers to provide state of the art product and services in the areas of,

- **Automation**
- **IIoT or Industry 4.0 or e-Factory system**
- **Process Plant Design & Supply**

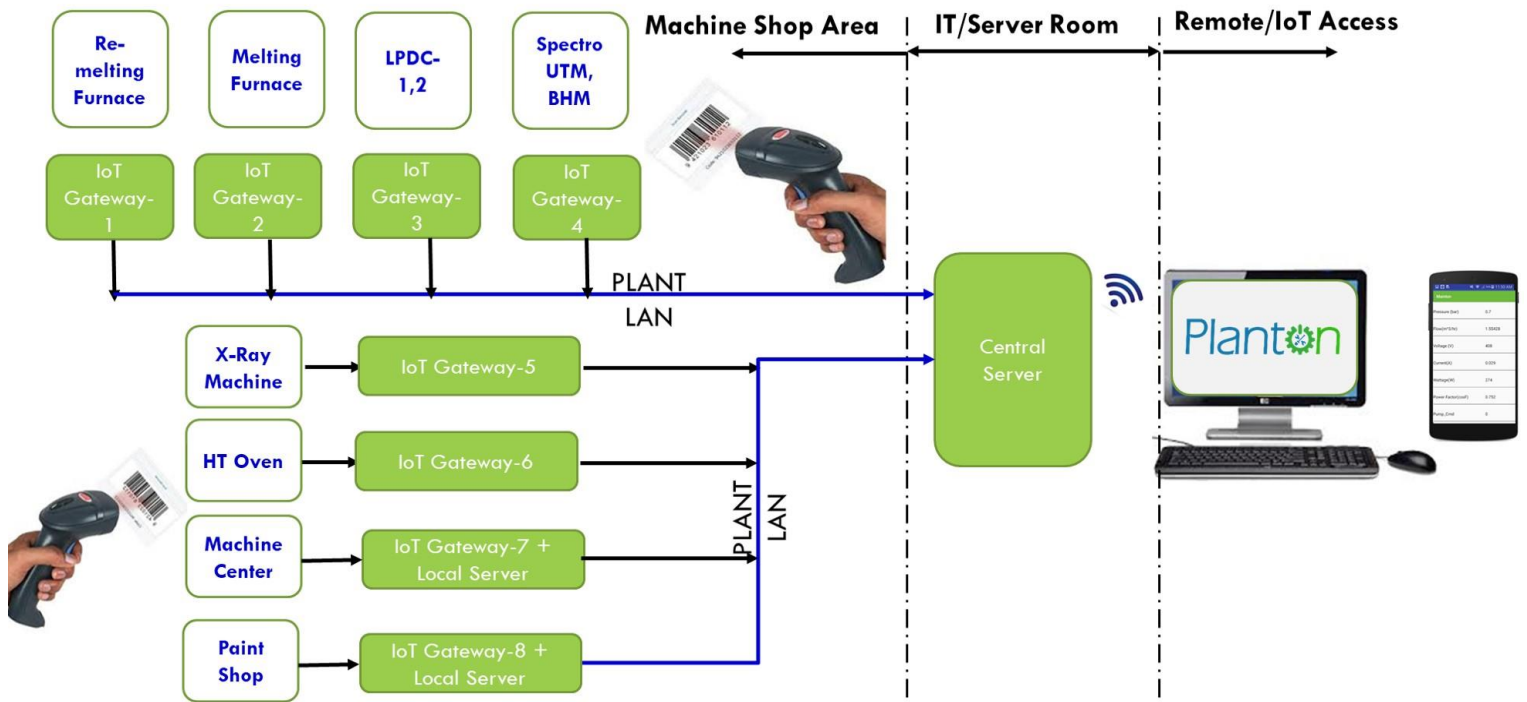
With the objective to help customers to improve Productivity, Efficiency, Quality & Safety of equipment's or Plants.

We are well versed to deal with both Greenfield and Brownfield requirements to provide turnkey and/or customized solutions.

## Needs of customers

1. **Quality** Monitoring & Improvement
2. **Productivity** Improvement
3. **Cost** Reduction
4. End to End **Traceability** of material, process and men
5. Preventive & Predictive **Maintenance**
6. Linking production to **ERP** System

## IIoT For Die Casting Industry



Contact Us: Instron Technologies Office No. 8 Plot No 165/1/, T Block, Priyadarshani Industry Society, MIDC, Bhosari, Pune, Maharashtra India-411026

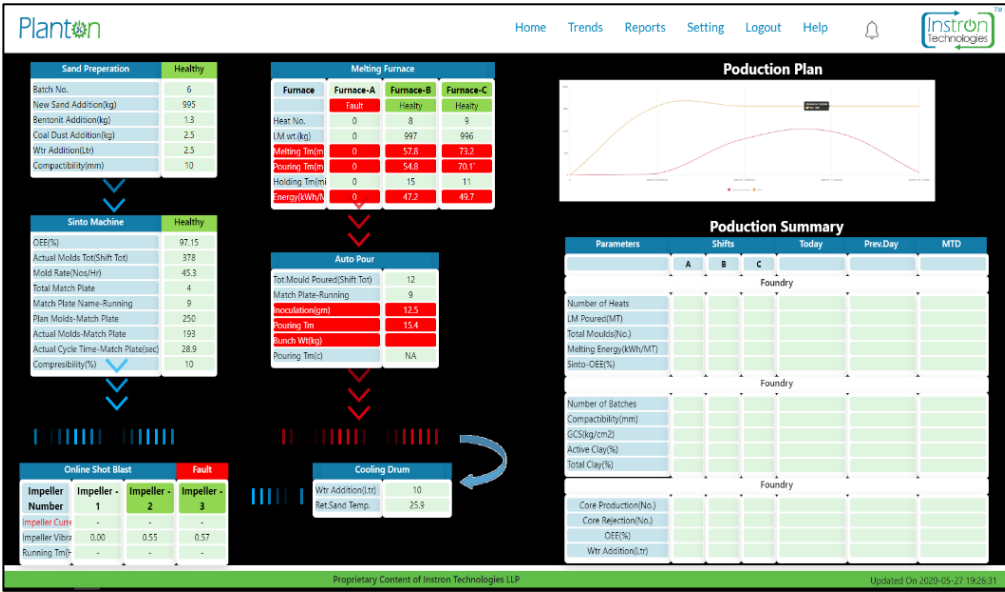
Phone: +91 7028015958

Email: sales@instrontechnologies.com

Web: www.instrontechnologies.com

# KPI Dashboard & Traceability Reports:

## Foundry Section



## Reports

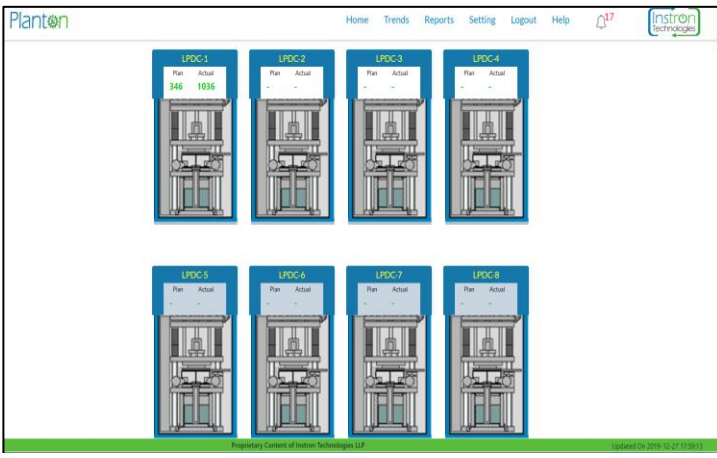
Date: 03-09-2020

PARAMETER	UOM	SHIFT A	SHIFT B	SHIFT C	TOTAL TODAY	PREVIOUS DAY	M.T.D
FOUNDRY DASHBOARD							
Batch/Heat	No	5	-	-	5	5	10
LM Poured	MT	5.5	-	-	5.5	5.5	11
Total Moulds	No	420	-	-	420	450	870
Melting Energy	MWH/MT	0.67	-	-	0.67	0.67	0.67
SINTO-OEE	%	-	-	-	-	-	-
SAND PLANT DASHBOARD							
Sand Batches	No	57	-	-	57	55	112
Compatibility	Scale	42	-	-	42	42	42
GCS	gram2	1290	-	-	1290	1380	1335
Active Clay	%	7.56	-	-	7.56	7.56	7.55
Total Clay	%	11.56	-	-	11.56	11.56	11.56
CORE SHOP DISPLAY							
Core Production	No	960	-	-	960	960	1920
Setup Time	min	90	-	-	90	90	180
Core Rejection	%	0.2	-	-	0.2	0.31	0.28
Core Temp	degC	260	-	-	260	260	260
Passin Sand Consumption	MT	0.15	-	-	0.15	0.15	0.65
LPG Consumption	m3	-	-	-	-	-	-
OEE	%	-	-	-	-	-	-

Paintshop

Line	Process	Water Rise	Pre-degreasing	Degreasing	Water Rinse 1	Water Rinse 2	Chamber Cooler 1	Chamber Cooler 2	DM Water 1	DM Water 2	Oxidation 1	Oxidation 2	DM Water 3	DM Water 4	Final DM
Pressure	0.12	0.12	0.12	0.12	0.12	0.12	0.12	0.12	0.12	0.12	0.12	0.12	0.12	0.12	0.12
Temp	45.0	45.0	45.0	45.0	45.0	45.0	45.0	45.0	45.0	45.0	45.0	45.0	45.0	45.0	45.0
Condu	100	100	100	100	100	100	100	100	100	100	100	100	100	100	100
pH	8.0	8.0	8.0	8.0	8.0	8.0	8.0	8.0	8.0	8.0	8.0	8.0	8.0	8.0	8.0

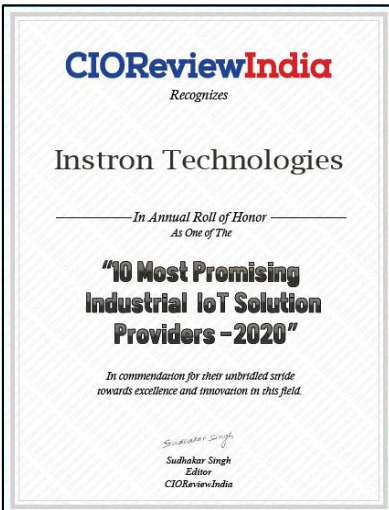
## Die Casting Section



## Paintshop Section



## References:



## Our Satisfied Customers



Contact Us: Intron Technologies Office No. 8 Plot No 165/1/, T Block, Priyadarshani Industry Society, MIDC, Bhosari, Pune, Maharashtra India-411026

Phone: +91 7028015958

Email: sales@instrontechnologies.com

Web: www.instrontechnologies.com